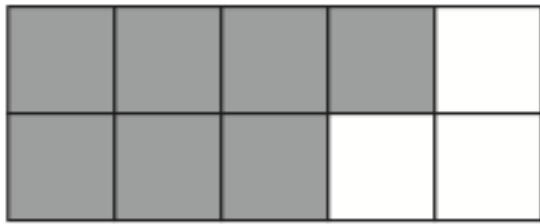
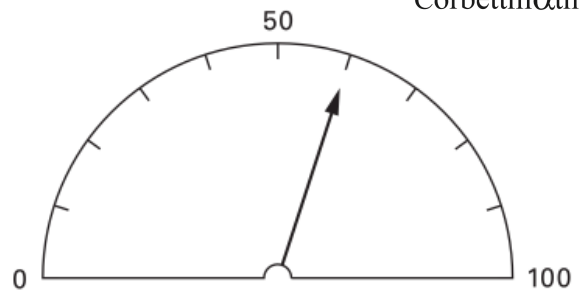


14th September

Corbettmaths

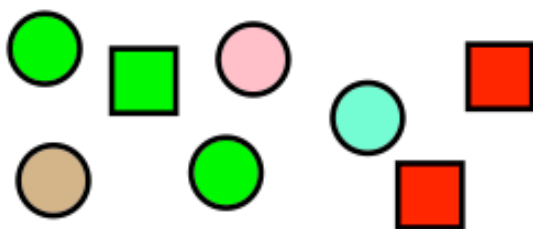
Shown is a car speedometer.
The speed limit is 25mph.

The car is how many mph over the
speed limit?



What fraction of the rectangle is
shaded?

Write **seven thousand, eight hundred
and nineteen** in figures.



A counter is picked at random.

Write down the probability that the
counter is green.

A counter is picked at random.

Write down the probability that the
counter is a square.

A counter is picked at random.

Write down the probability that the
counter is a pink square.