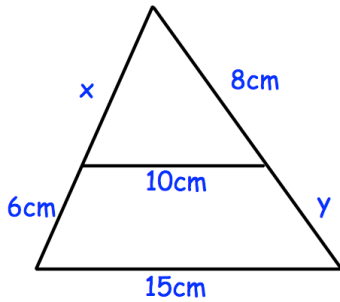


15th September



Corbettmaths



Find x and y .



Calculate bearing of B from A.

A is directly proportional to the cube root of B.

When $A = 90$, $B = 27$.

Find A in terms of B.

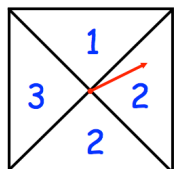
The pressure of a football is 500 grams per square centimetre.

Given

1 pound = 0.4536 kilograms

1 inch = 2.54 centimetres

Work out the pressure in pounds per square inch.



The spinner is spun three times. The three numbers are added together to give a score.

Find the probability the score is even.