

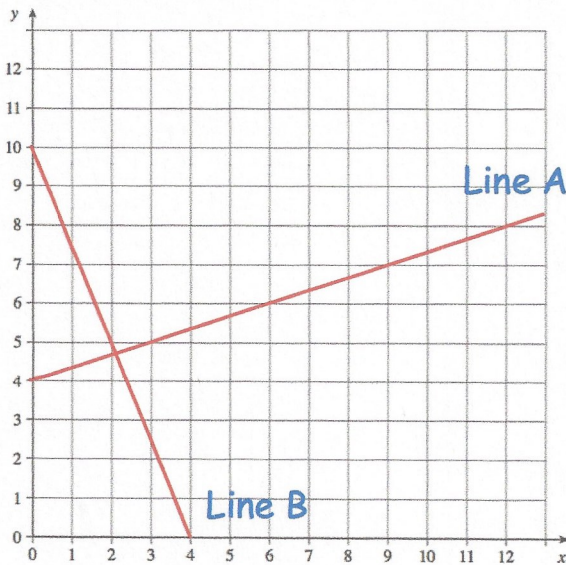
2nd October



Corbettmaths

Estimate

$$\sqrt{\frac{50.77}{0.513}} \approx \sqrt{\frac{50}{0.5}} = \sqrt{100} = 10$$

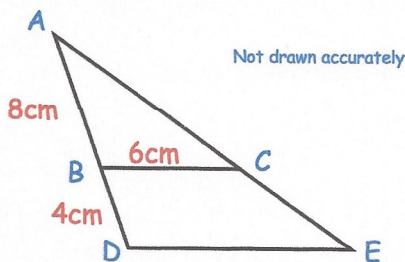


Write down the equation of Line A

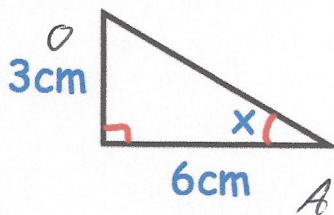
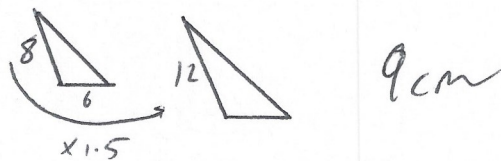
$$y = \frac{1}{3}x + 4$$

Write down the equation of Line B

$$y = -2.5x + 10$$



Triangle ABC is similar to triangle ADE.  
Work out the length of DE.



$$\tan x = \frac{3}{6}$$

$$\tan^{-1}\left(\frac{3}{6}\right)$$

Find the size of the angle x.

$$x = 26.565^\circ$$