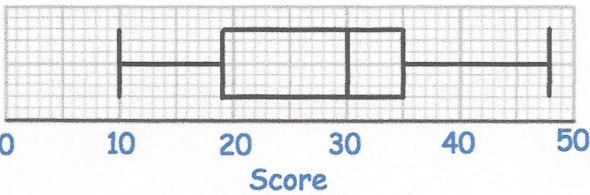


2nd October

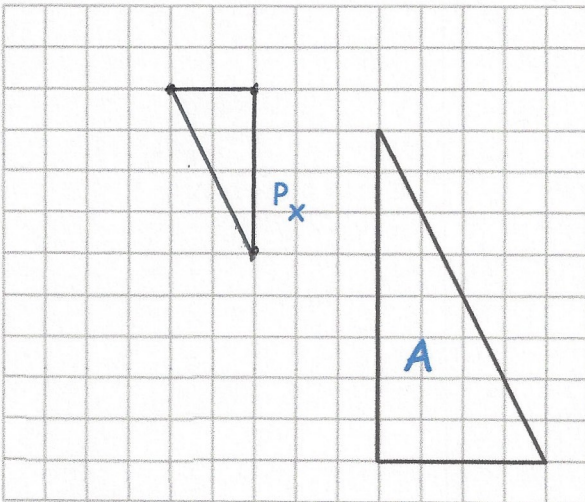


Corbettmaths

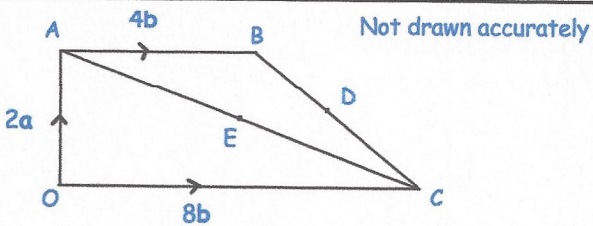


Write down the median score

30



Enlarge shape A by scale factor $\frac{1}{2}$, using the point P as centre of enlargement.



Point D is the midpoint of BC.
Point E is the midpoint of AC.

Write down a vector for \overrightarrow{AC}

$-2a + 8b$

The final velocity of a traveling object is given by the formula

$$v = u + at$$

where v is the final velocity
 u is the initial velocity
 a is the acceleration
and t is the time

Given $u = 2.4 \text{ m/s}$ correct to 2 significant figures, 2.35
 $a = 12 \text{ m/s}^2$ correct to 2 significant figures, 11.5
and $t = 5$ seconds correct to 1 significant figure.

Calculate the lower bound for v .
 4.5
 $\text{min } v = 2.35 + 11.5 \times 4.5$
 $= 54.1$