

14th September



Corbettmaths

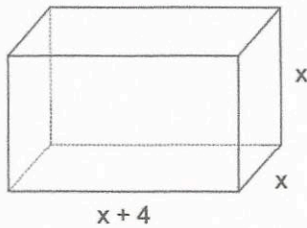
Calculate the radius of a circle with area 250cm^2

$$\pi r^2 = 250$$

$$\div \pi \quad \div \pi$$

$$r^2 = 79.577..$$

$$r = 8.92 \text{ cm}$$

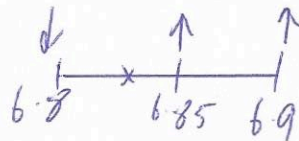


The volume of the cuboid is 500cm^3 .
An expression for the volume of the cuboid is $x^3 + 4x^2$

Find the value of x to 1 decimal place

$$x^3 + 4x^2 = 500$$

x	$x^3 + 4x^2$	Comment
6.7	480.32	too low
6.8	499.39	too low
6.9	518.94	too high



6.85	509.1	too high
------	-------	----------

6.8

A dice is rolled.
A coin is flipped.

What is the probability of getting a tail and a prime number?

2, 3, 5

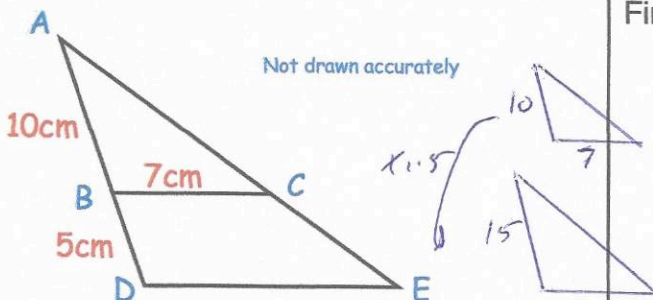
$$\frac{3}{6} = \frac{1}{2}$$

method 1

$$P(TP) = \frac{1}{2} \times \frac{1}{2} = \frac{1}{4}$$

method 2

H1	H2	H3	H4	H5	H6
T1	(T2)	(T3)	T4	(T5)	T6

$$\frac{3}{12} = \frac{1}{4}$$


Find the length of DE

$$7 \times 1.5 = 10.5 \text{ cm}$$