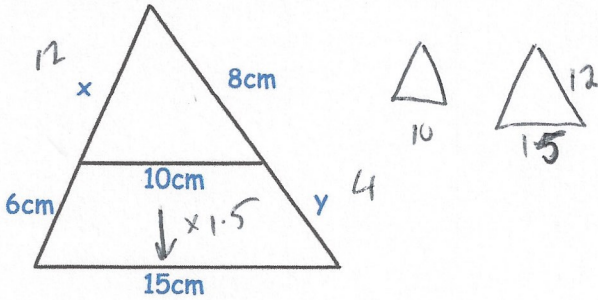


15th September



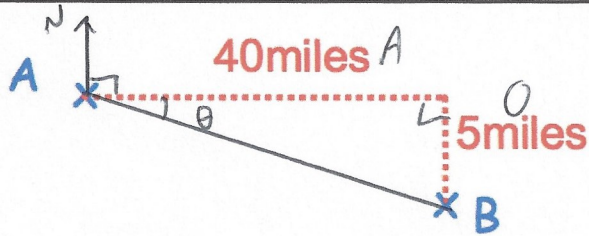
Corbettmaths



Find x and y.

$$y = 4 \text{ cm}$$

$$x = 12 \text{ cm}$$



Calculate bearing of B from A.

$$\tan \theta = \frac{O}{A} = \frac{5}{40}$$

$$\theta = 7.125$$

$$97.125^\circ$$

A is directly proportional to the cube root of B.

When A = 90, B = 27.

Find A in terms of B.

$$A \propto \sqrt[3]{B}$$

$$90 = k \times \sqrt[3]{27}$$

$$90 = k \times 3$$

$$k = 30$$

$$A = 30 \times \sqrt[3]{B}$$

The pressure of a football is 500 grams per square centimetre.

Given

1 pound = 0.4536 kilograms

1 inch = 2.54 centimetres

$$1 \text{ inch}^2 = 6.4516 \text{ cm}^2$$

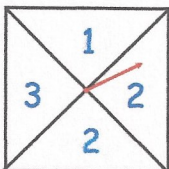
Work out the pressure in pounds per square inch.

$$500 \text{ g/cm}^2 \div 453.6$$

$$1.1023 \text{ lb/cm}^2$$

$$\times 6.4516$$

$$7.11 \text{ lb/in}^2$$



- EEO → 0x
- EOE → 0x
- OEE → 0x
- ECE → EV

- OOO → 0x
- OOE → EV
- OEO → EV
- EOO → EV

$$P(EEE) = \frac{1}{2} \times \frac{1}{2} \times \frac{1}{2} = \frac{1}{8}$$

$$P(OOE) = \frac{1}{2} \times \frac{1}{2} \times \frac{1}{2} = \frac{1}{8}$$

$$P(OEO) = \frac{1}{8}$$

$$P(EOO) = \frac{1}{8}$$

The spinner is spun three times. The three numbers are added together to give a score.

Find the probability the score is even.

$$\frac{1}{2}$$