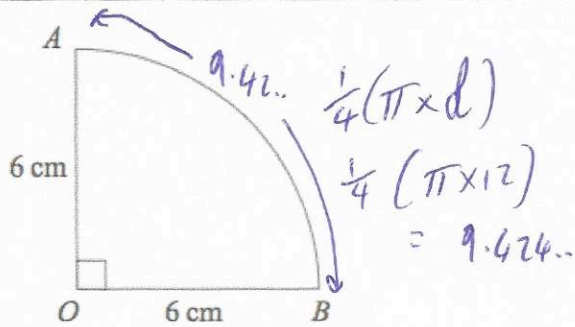


3rd September



Corbettmaths



Calculate the perimeter of this sector.

$$9.424\dots + 6 + 6 = 21.42\text{ cm}$$

Solve  $5x + 2 < 7$ 

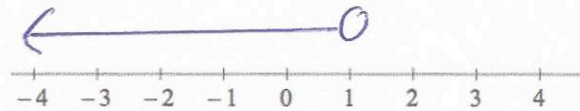
$$5x < 5$$

~~5x < 5~~

$$\div 5 \quad \div 5$$

$$x < 1$$

Represent the answer on the number line



Find the gradient of the line with equation  $y = 5x - 2$

$$5$$
Solve  $x^2 + 6x + 5 = 0$ 

$$(x+5)(x+1) = 0$$

$$x = -5 \text{ or } x = -1$$

Write down the exact value of  $\sin 45^\circ$ 

$$\frac{\sqrt{2}}{2}$$

Write down the exact value of  $\cos 45^\circ$ 

$$\frac{\sqrt{2}}{2}$$