

13th April



Corbettmaths

Factorise

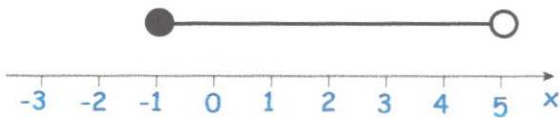
$$x^2 + 3x - 10$$

$$(x + 5)(x - 2)$$

Factorise

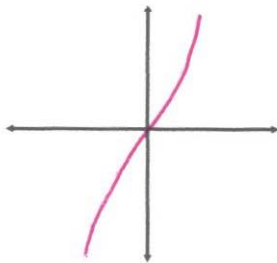
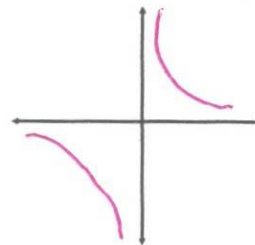
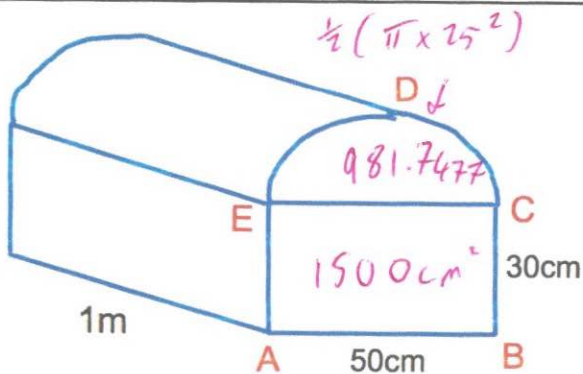
$$x^2 - 3x - 4$$

$$(x + 1)(x - 4)$$



Write the inequality shown

$$-1 \leq x < 5$$

Sketch $y = x^3$ Sketch $y = \frac{1}{x}$ where $x \neq 0$ 

Calculate the volume of the prism.
Give your answer correct to 1 decimal place.

$$2481.74... \times 100$$

$$248174.8 \text{ cm}^3$$

Shown above is a prism that is 1m long.

ABCDE is the cross-section of the prism.
ABCE is a rectangle and CDE is a semi-circle.