

18th April



Corbettmaths

A bag of 20 potatoes has 3 bad potatoes.

Another bag has 100 potatoes. How many bad potatoes are expected?

$$\frac{3}{20} \text{ bad}$$

$$\frac{3}{20} \xrightarrow{\times 5} \frac{15}{100}$$

$$\underline{15}$$

Solve

$$\frac{y}{3} = 6$$

$$\times 3 \quad \times 3$$

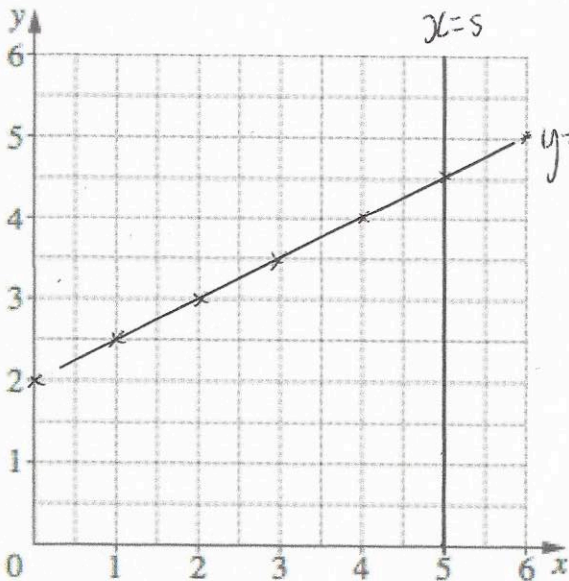
$$y = 18$$

$$y = 18$$

Estimate $41.2 \div 7.98$

$$\approx 40 \div 8 = 5$$

$$5$$



Draw $x = 5$

Draw $y = \frac{1}{2}x + 2$

x	0	1	2	3
y	2	2.5	3	3.5