

1st April



Corbettm@ths

Solve $3(2x - 6) = 12$

$$6x - 18 = 12$$

$$6x = 30$$

$$x = 5$$

Monday: 10 apples and 5 bananas
cost £4.20

Friday: 8 apples and 10 bananas
cost £5.40

Find the cost of each.

$$\begin{aligned} 10x + 5y &= 420 \quad \times 2 \\ 8x + 10y &= 540 \end{aligned}$$

$$20x + 10y = 840$$

$$8x + 10y = 540$$

$$\hline 12x = 300$$

$$x = 25$$

$$250 + 5y = 420$$

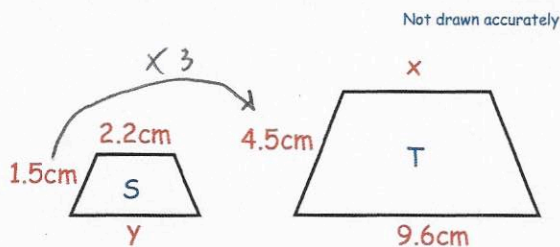
$$5y = 170$$

$$y = 34$$

Apple: 25p Banana: 34p

Work out

$$\left(\frac{2}{3}\right)^{-2} = \left(\frac{3}{2}\right)^2 = \frac{9}{4}$$



Trapezium S and trapezium T are similar.

Find the size of x.

6.6cm

Write down the exact value of $\sin 60^\circ$

$$\frac{\sqrt{3}}{2}$$

Write down the exact value of $\sin 45^\circ$

$$\frac{\sqrt{2}}{2}$$