

10th August



Corbettmaths

The table shows the probabilities that a sweet taken from a jar will be red, pink or purple.

Colour	Red	Pink	Purple
Probability	0.4	0.25	0.35

There are 4000 sweets  
How many are purple?

$$4000 \times 0.35 = 1400$$

Simplify

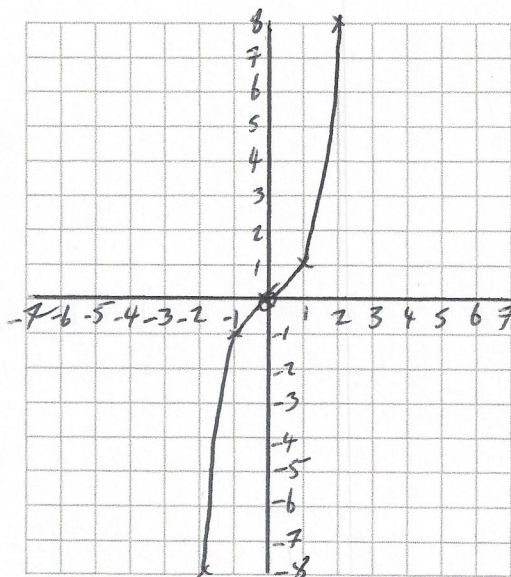
$$2a^3c^3 \times 3a^2c$$

$$6a^5c^4$$

$$y = x^3$$

Complete the table of values and draw a graph

x	-2	-1	0	1	2
y	-8	-1	0	1	8



Solve

$$2x - 3y = 7 \quad \times 5$$

$$3x + 5y = 1 \quad \times 3$$

$$10x - 15y = 35$$

$$\text{Add } 9x + 15y = 3$$

$$19x = 38$$

$$x = 2$$

$$6 + 5y = 1$$

$$5y = -5$$

$$y = -1$$

$$x = 2$$

$$y = -1$$