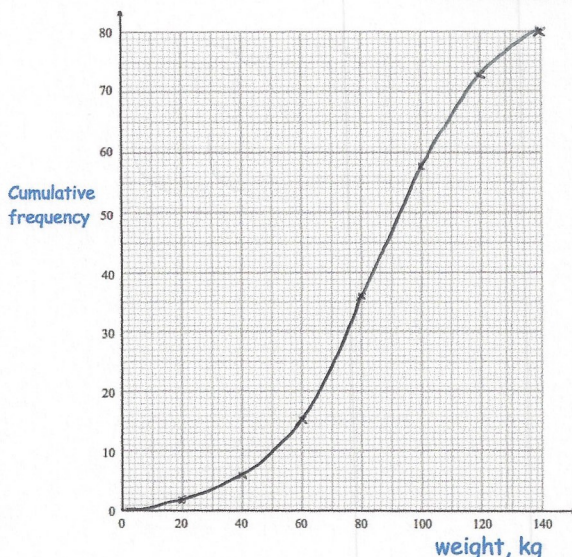


11th August



Corbettmaths

Weight, $w$ kg	Cumulative frequency
$0 < w \leq 20$	2
$0 < w \leq 40$	6
$0 < w \leq 60$	15
$0 < w \leq 80$	36
$0 < w \leq 100$	58
$0 < w \leq 120$	73
$0 < w \leq 140$	80



Draw a cumulative frequency graph for this information.

**Offer 1**  
30% extra free

**Offer 2**  
30% off the price

**Offer 3**  
Buy one get one half price

Which offer is best value for money?

There are 3 different offers on jars of coffee.  
The jar usually contains 500g of coffee.

price eg £8.

offer 1 650g for £8.00  
1g = 1.23p  
offer 2 500g for £5.60  
1g = 1.12p  
offer 3 1000g for £12.00  
1g = 1.2p

offer 2 is the best value

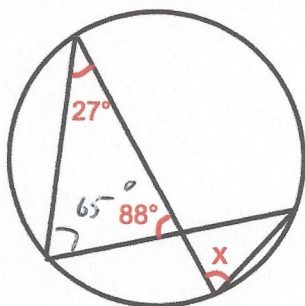
Solve

$$\frac{x + 11}{2x - 5} = 2$$

$$x + 11 = 4x - 10$$

$$21 = 3x$$

$$x = 7$$



Find  $x$

$$27 + 88 = 115$$

$$180 - 115 = 65^\circ$$

$$x = 65^\circ$$