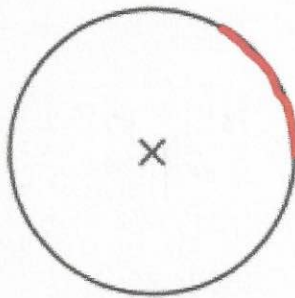


18th August

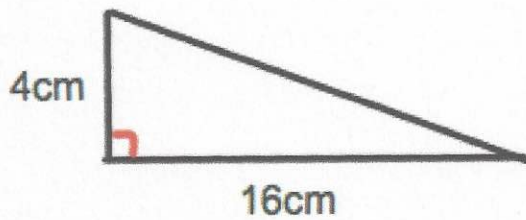


Corbettmaths



What part of the circle is shown? (in red)

arc



Find the area of the triangle.

$$\frac{1}{2} (16 \times 4)$$

$$\frac{1}{2} (64) = 32 \text{ cm}^2$$

Simplify

$$y^2 + y^2 + y^2$$

$$3y^2$$

Arrange in order, from smallest to largest.

$$\frac{1}{3}$$

$$\frac{7}{12}$$

$$\frac{3}{4}$$

$$\frac{4}{12}$$

$$\frac{9}{12}$$

$$\frac{1}{3}, \frac{7}{12}, \frac{3}{4}$$

Find the nth term

1, 1.5, 2, 2.5, ...

$$0.5n + 0.5$$

Find the 20th term.

$$0.5 \times 20 = 10$$

$$10 + 0.5 =$$

10.5