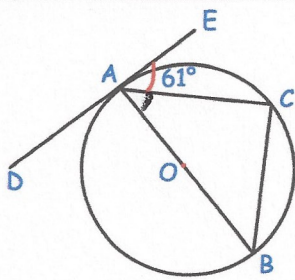


20th August



Corbettmaths



AB is the diameter. DE is a tangent at A.

Angle CAE is  $61^\circ$ .

Find angle BAC.

$29^\circ$

Find angle ABC.

$61^\circ$

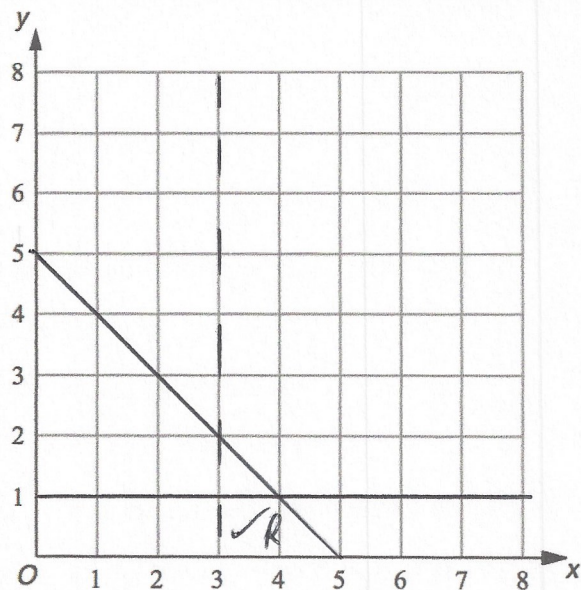
A region R satisfies the inequalities

$$x + y \leq 5$$

$$x > 3$$

$$y \leq 1$$

Show this region on the grid.



Make  $w$  the subject of

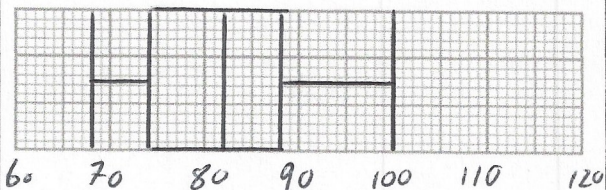
$$8(w - 3a) = 3w + 7$$

$$8w - 24a = 3w + 7$$

$$5w = 24a + 7$$

$$w = \frac{24a + 7}{5}$$

Lowest	68kg
Lower Quartile	74kg
Median	82kg
Upper Quartile	88kg
Highest	100kg



Draw a box plot to show this information