

31st August



Corbettmaths

Simplify

$9(5y + 3) - 4$

$45y + 27 - 4$

$45y + 23$

The ratio of red beads to white beads on a necklace is $\underline{5:2}$. $2+5=7$

What fraction of the beads are white?

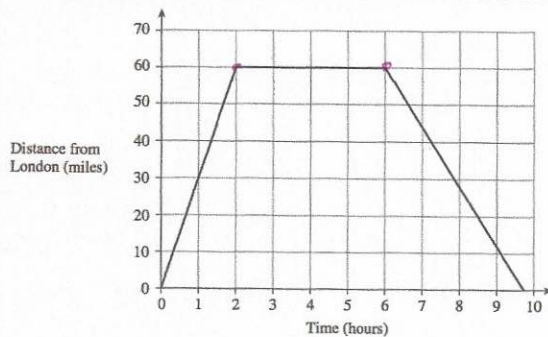
$\frac{2}{7}$

There are 60 red beads, how many white beads are there?

~~60 ÷ 5 = 12~~
 So $60 \div 5 = 12$
 $12 \times 2 = 24$

Expand $5(x + 3)$

$5x + 15$



David lives in London. He visited his aunt and then returned home.

How long did he stay at his aunt's?

4 hours

How far away from London does his aunt live?

60 miles

How far his David travel?

120 miles