

5th August



Write in standard form

$$120 \times 10^8$$

$$1.2 \times 10^{10}$$

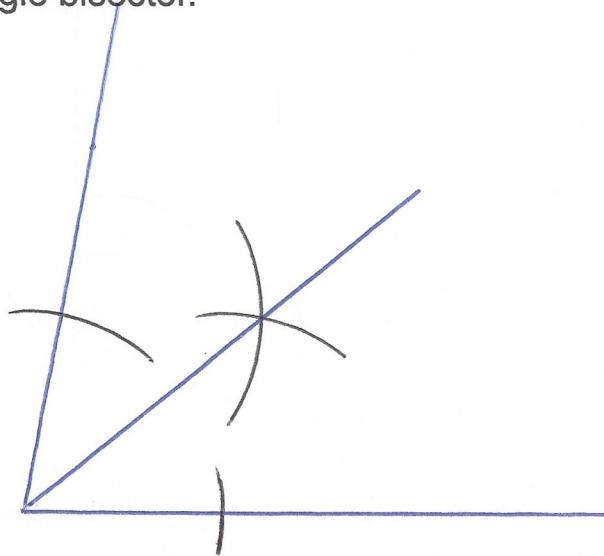
Write in standard form

$$0.00000000000034$$

$$3.4 \times 10^{-12}$$

Corbettmaths

In the space below, draw a  $80^\circ$  angle.  
Construct the angle bisector.



The circumference of a circle is 60cm.

Work out the area of the circle.

$$C = \pi \times d$$

$$60 = \pi \times d$$

$$d = 60 \div \pi = 19.098...$$

$$r = 9.549...$$

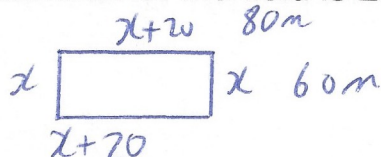
$$A = \pi \times r^2$$

$$= \pi \times 9.549...^2$$

$$= 286.4788976 \text{ cm}^2$$

A rectangular field is 20 metres longer than wide.

The perimeter of the field is 280m.



Find the area of the field.

$$4x + 40 = 280$$

$$4x = 240$$

$$x = 60$$

$$A = 60 \times 80 = 4800 \text{ m}^2$$