

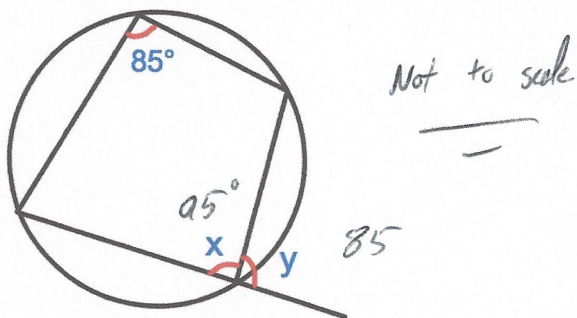
7th August



Simplify $\sqrt{1000}$

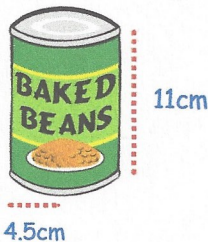
$$\sqrt{100} \times \sqrt{10}$$

$$10\sqrt{10}$$



Find x and y

A can of baked beans has a paper label wrapped around the outside. The can has a height of 11cm and radius of 4.5cm. The label covers the entire height of the can. The label has a 1cm overlap vertically so that it can be stuck together. Calculate the area of the label.



$$\pi \times 9 = 28.27\dots$$

$$28.27\dots + 1 =$$

$$29.27\dots$$

$$29.27\dots \times 11$$

$$322\text{cm}^2$$

Solve $3x^2 - 7x + 4 = 0$

$$(3x - 4)(x - 1) = 0$$

$$x = \frac{4}{3} \quad x = 1$$