

26th August



Corbettmaths

Factorise $x^2 + 9x + 20$

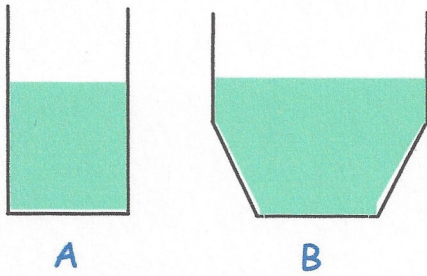
$$(x+4)(x+5)$$

Work out the sum of the interior angles for a 40 sided polygon.

$$(n-2) \times 180$$

$$38 \times 180$$

$$6840^\circ$$



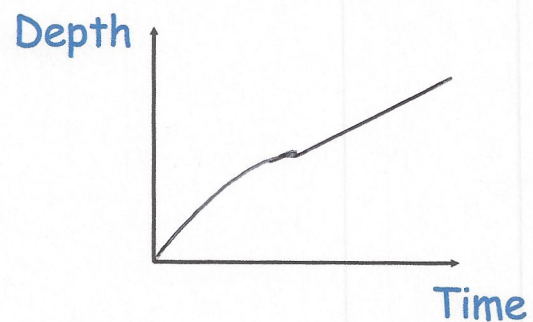
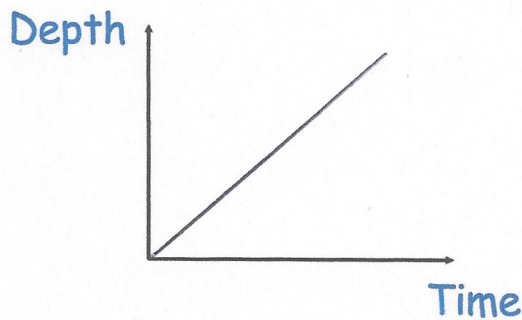
A

B

Water pours steadily into containers A and B.

Both containers are empty before the water is poured in.

Sketch graphs to show the depth of water over time.



Which is smaller?

$$(x+3)^2 \text{ or } x^2 + 6x + 7$$

$$x^2 + 6x + 9$$

$$(x+3)(x+3)$$

$$x^2 + 6x + 9$$

$$x^2 + 6x + 7$$