

19th December



Corbettmaths

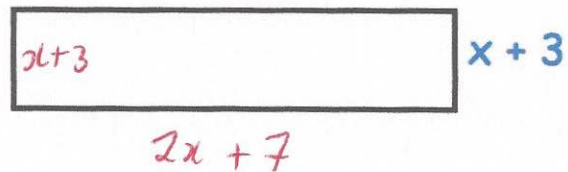
Decimal	Fraction	Percentage
0.5	$\frac{1}{2}$	50%
0.25	$\frac{1}{4}$	25%
0.7	$\frac{7}{10}$	70%
0.07	$\frac{7}{100}$	7%

Complete the table.

Find an expression for the perimeter of the rectangle

$$6x + 20$$

$$2x + 7$$

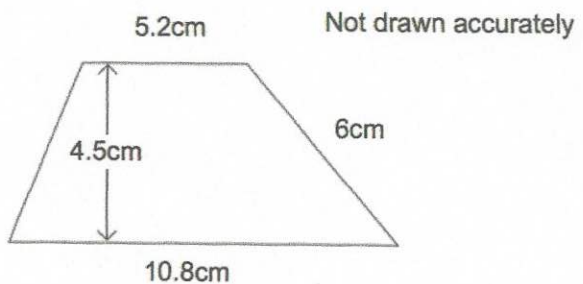


Find the area of the trapezium

$$\frac{1}{2}(a+b)d$$

$$\frac{1}{2}(5.2 + 10.8) \times 4.5$$

$$36 \text{ cm}^2$$



At a rugby match, the ratio of children to adults is 2 : 3

There are 80 children in the crowd.

Each adult ticket costs £8

Each child ticket costs a quarter of the adult ticket.

$$\frac{1}{4} \times 8 = 2$$

Work out the total money made from ticket sales

$$80 \div 2 = 40$$

$$40 \times 3 = 120 \text{ adults}$$

$$120 \times 8 = \pounds 960$$

$$80 \times 2 = \pounds 160$$

$$\pounds 960 + \pounds 160 = \pounds 1120$$