

2nd December

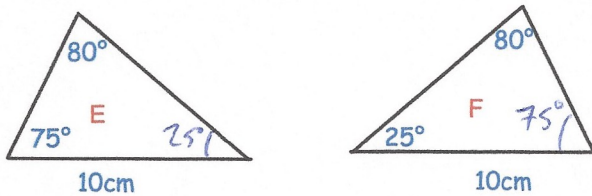


Corbettmaths

Natalie invests £600 for 2 years at 10% per year compound interest. How much interest does she earn?

$$600 \times 1.1^2 = 726$$

£126

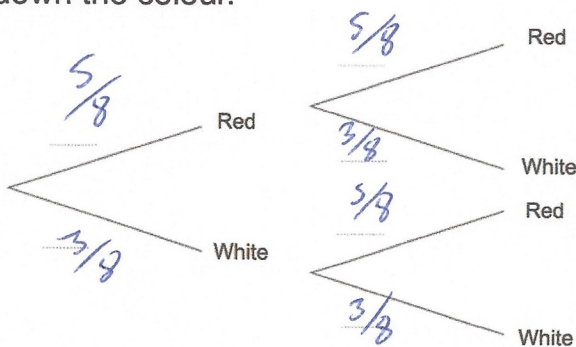


Gillian says that these two triangles are mathematically similar. *Congruent* Is she correct?

Yes

Natalie has 8 socks in a drawer. 5 of the socks are red. 3 of the socks are white. Natalie takes out a sock at random, writes down the colour and puts it back into the drawer and then takes out a second sock, at random, and writes down the colour.

Complete the probability tree diagram.



Work out the probability that the two socks are the same colour.

$$\left. \begin{aligned} \frac{5}{8} \times \frac{5}{8} &= \frac{25}{64} \\ \frac{3}{8} \times \frac{3}{8} &= \frac{9}{64} \end{aligned} \right\} = \frac{17}{32}$$

Write down the exact value of $\cos 60^\circ$

$\frac{1}{2}$

Write down the exact value of $\cos 180^\circ$

-1