

22nd December



Corbettmaths

The front elevation of a solid shape is a triangle.
 The side elevation of the solid shape is a triangle.
 The plan view of the solid shape is a square.

Square based pyramid

Write down the name of the shape.

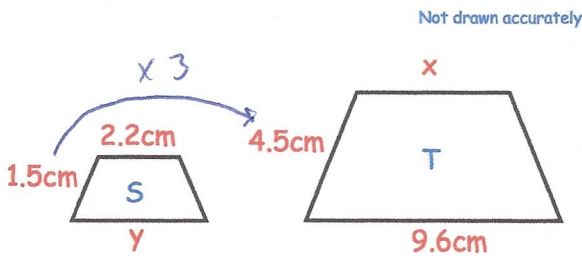
James bought a house.
 In the first year the value of the house decreased by 10%.
 In the second year the value of the house increased by 10%.

Is the house worth more, less, or the same as what James paid for it?
 Explain your answer.

$$100 \times 0.9 = 90$$

$$90 \times 1.1 = 99$$

Less by 1%



Trapezium S and trapezium T are similar.

Find the size of x.

$$2.2 \times 3 = 6.6 \text{ cm}$$

There are 40 children at a youth club.
 There are 23 girls.
 9 girls play rounders.
 4 boys do not play rounders.

	B	G	Total
✓ R	13	9	22
x R	4	14	18
Total	17	23	40

How many boys play rounders at the youth club?

13

Expand and simplify

$$(w + 3)(w + 4) - (w + 2)(w + 7)$$

$$-2w - 2$$

$$w^2 + 7w + 12$$

$$- w^2 + 9w + 14$$
