

24th December



Corbettmaths



Shown is one angle from a regular polygon.

How many sides does it have?

$$360 \div 4 = 90 \text{ sides}$$

A special edition packet of flour contains an extra 24%.

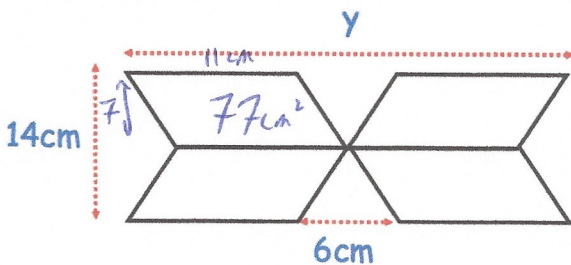
The special edition packet contains 558g.

What does the normal packet contain?

$$124\% = 558$$

$$1\% = 4.5$$

$$100\% = \underline{450g}$$



A shape is made from 4 congruent parallelograms.

The area of the shape is 308cm^2 .

Work out the length labelled y.

$$11 + 6 + 11 = 28 \text{ cm}$$

Solve these simultaneous equations

$$4x - 2y = 18 \quad \times 3$$

$$2x - 3y = 15 \quad \times 2$$

$$\begin{array}{r} 12x - 6y = 54 \\ 4x - 6y = 30 \\ \hline 8x = 24 \\ x = 3 \end{array}$$

$$6 - 3y = 15$$

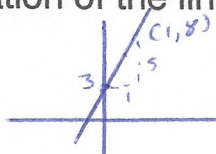
$$-9 = 3y$$

$$y = -3$$

$$x = 3, y = -3$$

A line has gradient 5 and passes through the point (1, 8)

Find the equation of the line.



$$y = 5x + 3$$