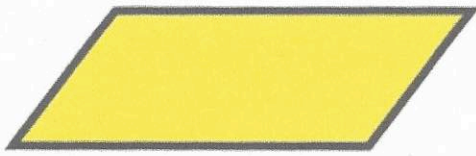


27th December



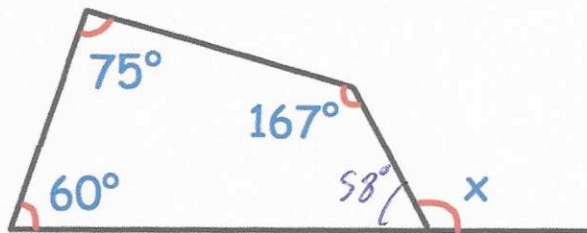
Corbettmaths



Shown is a parallelogram

Write down the order of rotational symmetry

2



Find x

$$60 + 75 + 167 = 302$$

$$360 - 302 = 58^\circ$$

$$180 - 58 = 122^\circ$$

Find the value of $4c + 5g$ when

$c = -6$ and $g = 1.5$

$$4 \times (-6) + 5 \times 1.5$$

$$-24 + 7.5$$

-16.5

Hannah is recording the number of letters in each word in an article. These are the first ten lengths.

3	4	5	6
2	4	3	7
3	6		

Work out the median.

2 3 3 3 4 4 5 6 6 7

4

Calculate the mean.

$$2 + 3 + 3 + 3 + 4 + 4 + 5 + 6 + 6 + 7 = 43$$

$$43 \div 10 = 4.3$$

The 11th word has 4 letters.

Tick the box which describes what affect this will have on the mean.

The mean will decrease

The mean will remain the same

The mean will increase