

5th December



Corbettmaths

Write down an estimate for $\sqrt{78}$

8.8 / 8.9

A line has equation $y = 6x - 1$

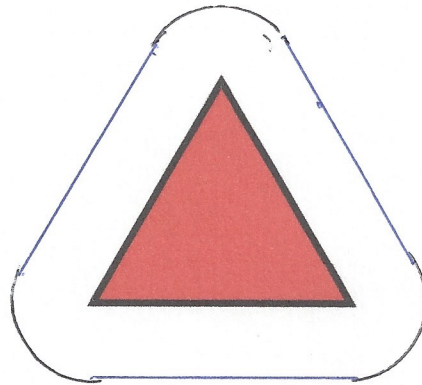
Write down the gradient of the line

6

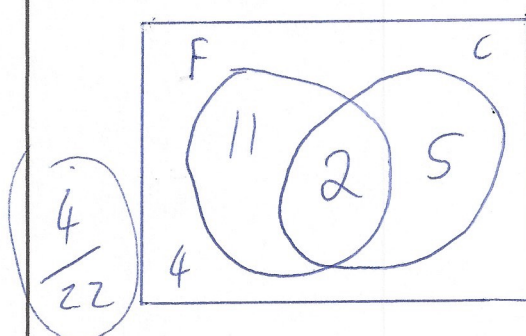
Write down the y-intercept of the line

(0, -1)
or -1

Draw the locus of points that are exactly 1cm away from the triangle.



In a class, there are 22 students.
Of these students, 13 play football,
7 play cricket and 2 played both
football and cricket.
A pupil is picked at random.
Find the probability that the pupil
does not play football or cricket.



$\frac{4}{22}$

or

$\frac{2}{11}$