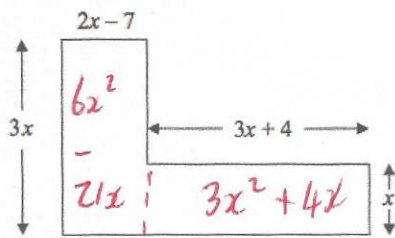


15th February



Find an expression for the area.

$$9x^2 - 17x$$

Solve

$$5(x - 1) = 4(x + 2) + 2(x - 7)$$

$$5x - 5 = 4x + 8 + 2x - 14$$

$$5x - 5 = 6x - 6$$

$$1 = x$$

$$x = 1$$

Calculate an estimate of the mean.

Time (t minutes)	Frequency
$0 < t \leq 10$	5 x 20
$10 < t \leq 20$	15 x 17
$20 < t \leq 30$	25 x 12

$$\begin{array}{r} 5 \\ 15 \\ 25 \\ \hline 49 \end{array}$$

$$\begin{array}{r} fx \\ 100 \\ 255 \\ 300 \\ \hline 655 \end{array}$$

$$655 \div 49 =$$

$$13.367$$

Simplify

$$\frac{s^3 \times s^4}{s^2}$$

$$\frac{s^7}{s^2}$$

$$s^5$$



Calculate the volume of the sphere.
Give your answer to 1 decimal place.

$$V = \frac{4}{3} \pi r^3$$

$$= \frac{4}{3} \times \pi \times 5^3$$

$$= 523.6 \text{ cm}^3$$