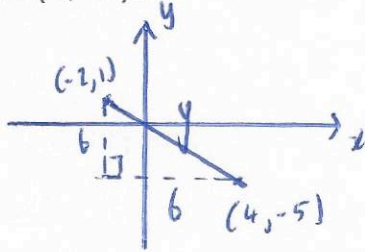


20th February



Corbettmaths

Calculate the distance between (-2, 1) and (4, -5).

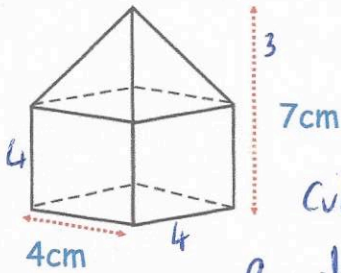


$$6^2 + 6^2 = y^2$$

$$36 + 36 = y^2$$

$$72 = y^2$$

$$y = \sqrt{72} = 6\sqrt{2}$$

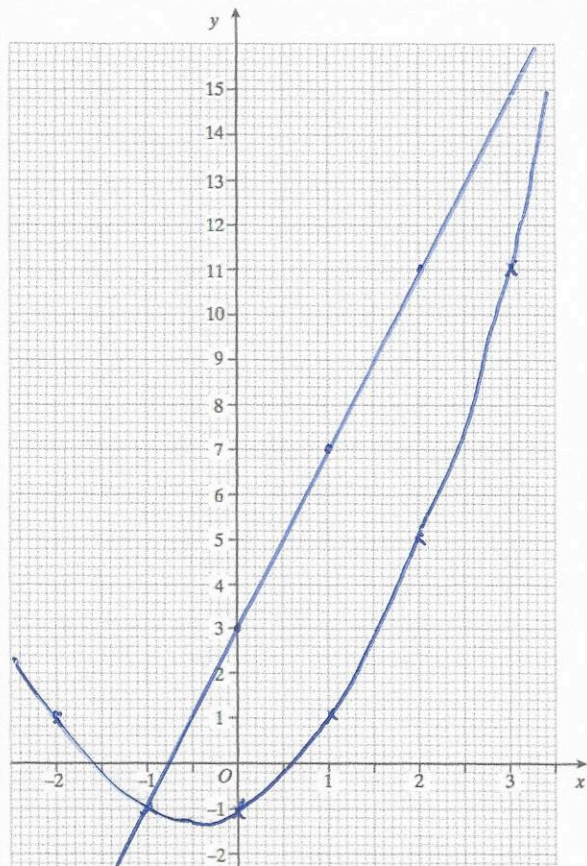


Cube = 64cm^3

Pyramid = $\frac{1}{3} \times 16 \times 3 = 16\text{cm}^3$

80cm^3

Shown is a shape made from a cube and a pyramid.
Calculate the volume



Draw the graph $y = 4x + 3$

x	0	1	2	3	4
y	3	7	11	15	19

Draw the graph $y = x^2 + x - 1$

x	-2	-1	0	1	2	3	4
y	1	-1	-1	1	5	11	19

Write down the coordinates of where the two graphs intersect.

$(-1, -1)$ e $(4, 19)$