

21st February



Corbettmaths

Three fair six sided dice are rolled.

Work out the probability of three even numbers.

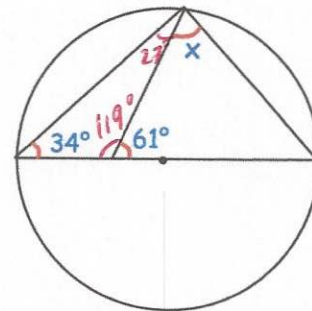
$$P(EEE) = \frac{1}{2} \times \frac{1}{2} \times \frac{1}{2}$$

$$\frac{1}{8}$$

Work out the value of x

$$90 - 27 = 63^\circ$$

$$63^\circ$$

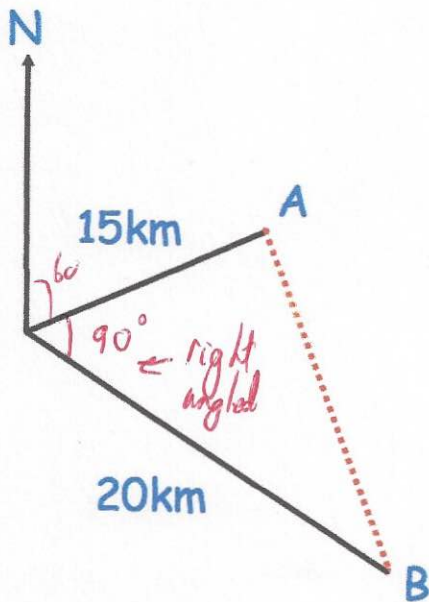


Simplify

$$\frac{x^2 + 6x + 9}{x^2 - 2x - 15}$$

$$\frac{(x+3)(x+3)}{(x-5)(x+3)}$$

$$\frac{x+3}{x-5}$$



Helicopter A traveled 15km on a bearing of 060°

Helicopter B traveled 20km on a bearing of 150°

Calculate the distance between A and B.

$$a^2 + b^2 = c^2$$

$$15^2 + 20^2 = c^2$$

$$225 + 400 = c^2$$

$$625 = c^2$$

$$c = 25$$

$$AB = 25 \text{ km}$$