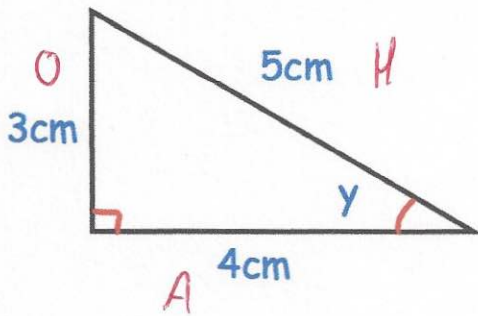


4th February



Corbettmaths



Write down the value of Sin y.

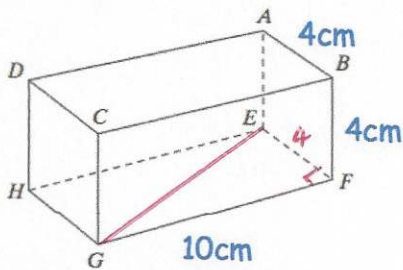
$$\sin y = \frac{O}{H} = \frac{3}{5}$$

Write down the value of Cos y.

$$\cos y = \frac{A}{H} = \frac{4}{5}$$

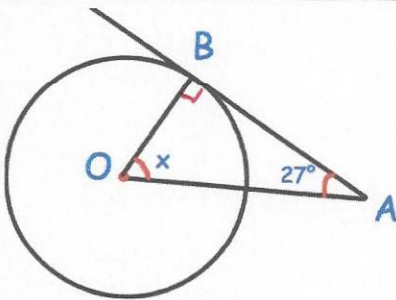
Write down the value of Tan y.

$$\tan y = \frac{O}{A} = \frac{3}{4}$$



Work out the length of EG

$$\begin{aligned} EG^2 &= 4^2 + 10^2 \\ &= 16 + 100 \\ &= 116 \\ EG &= \sqrt{116} = 10.77 \text{ cm} \end{aligned}$$

AB is a tangent.
Find x.

$$\begin{aligned} 90 + 27 &= 117^\circ \\ 180 - 117 &= 63^\circ \end{aligned}$$

The heights of 6 plants are listed below.
Each height is given to one decimal place.

4.45	7.15	8.05
4.5cm	7.2cm	8.1cm
9.6cm	9.1cm	3.1cm
9.55	9.05	3.05

Work out the smallest possible mean.

$$\begin{aligned} 41.3 \div 6 &= \\ 6.88\bar{3} \end{aligned}$$