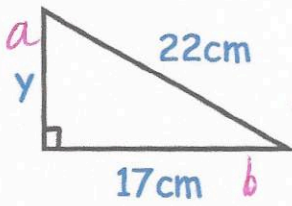


10th February



$$y^2 + 17^2 = 22^2$$

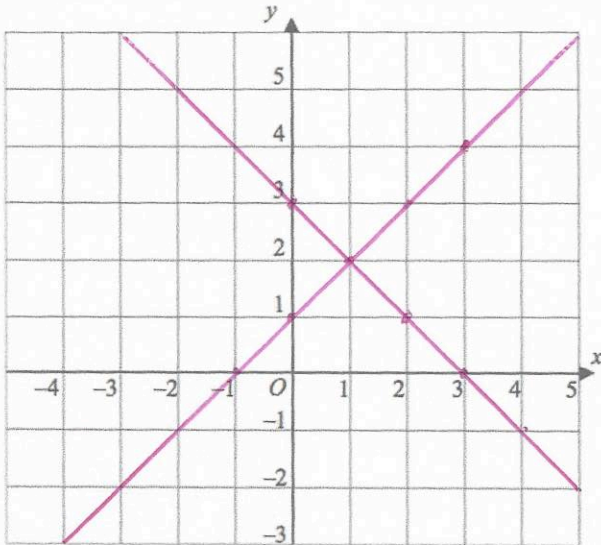
$$y^2 + 289 = 484$$

$$y^2 = 195$$

$$y = 13.964\text{cm}$$

$$13.964\text{cm}$$

Find y.



$$y = x + 1$$

x	0	1	2
y	1	2	3

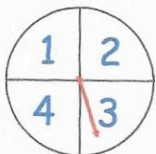
$$x + y = 3$$

x	0	1	2
y	3	2	1

Draw  $x + y = 3$  and draw  $y = x + 1$ .

Write down the coordinates of where the two graphs intersect.

$(1, 2)$



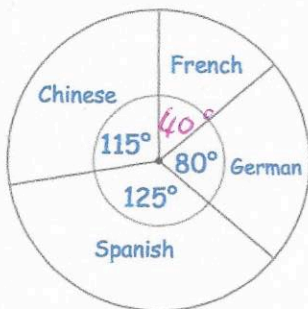
$$P(1) = 0.4$$

$$P(3) = 0.2$$

The probability of landing on a 2 is 0.25  
 The probability of landing on a 4 is 0.15  
 The probability of landing on a 1 is double the probability of a 3.

The spinner is spun 500 times.  
 Calculate the number of times you would expect it to land on 3

$$0.2 \times 500 = 100$$



$$648 \times \frac{40}{360} = 72$$

French

$$648 \times \frac{115}{360} = 207$$

The pie chart shows information about the languages studied in a school. There are 648 students in the school. Each student studies one language. How many more students study Chinese than French?

$$207 - 72 = 135$$