

13th February



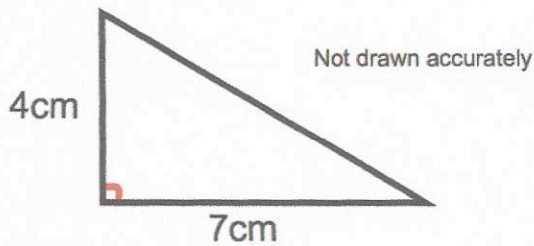
Corbettmaths

Work out

 $\frac{5}{7}$ of 168

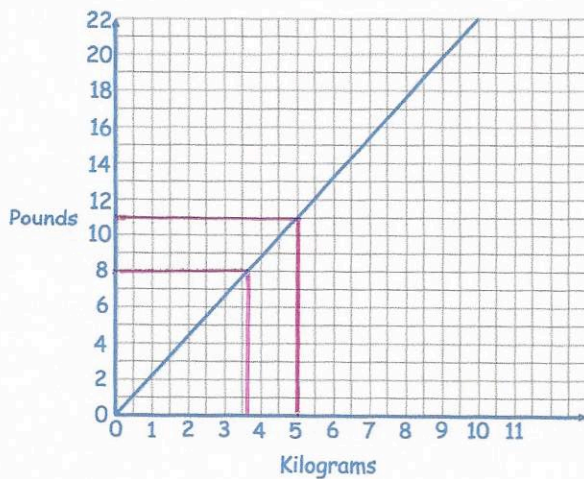
$$168 \div 7 = 24$$

$$24 \times 5 = 120$$

$$\underline{120}$$


Find the area of the triangle.

$$\frac{1}{2} (7 \times 4) = 14 \text{ cm}^2$$



Using the graph, convert 5 kilograms to pounds.

$$11 \text{ pounds}$$

Using the graph, convert 8 pounds to kilograms.

$$3.6 \text{ kg}$$

Find the nth term of

8 12 16 20

$$4n + 4$$

Find the 100th term.

$$4 \times 100 + 4$$

$$404$$