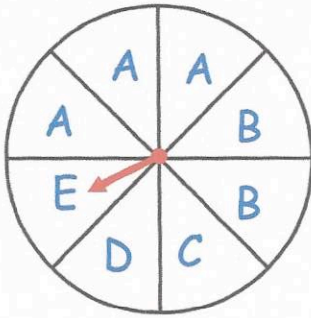


28th February



Corbettmaths



A fair spinner has eight equal sections.

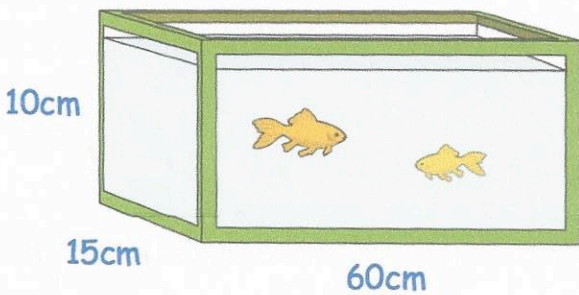
What is the probability that the arrow lands on a B or a C?

$$\frac{3}{8}$$

Arrange in order, starting with the smallest

3^2 $\sqrt{100}$ 4^2 $\sqrt{80}$ *less than 9*
 9 10 16

$$\sqrt{80}, 3^2, \sqrt{100}, 4^2$$



Find the volume of the fishtank

$$10 \times 15 \times 60 = 9000 \text{ cm}^3$$

There are red sweets and yellow sweets in a bag.

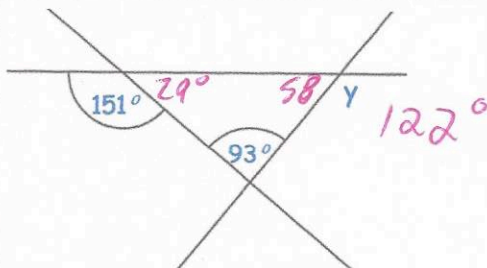
$\frac{5}{6}$ of the sweets are yellow.

There are 20 yellow sweets in the bag.

Work out how many sweets in total are in the bag.

$$20 \div \frac{5}{6} = 4$$

$$4 \times 6 = \underline{24}$$



Find the size of angle y.

$$122^\circ$$

Above are 3 straight lines