



19th January

$6 \times -4$

$-24$

$-7 \times -4$

$28$

From the list of numbers

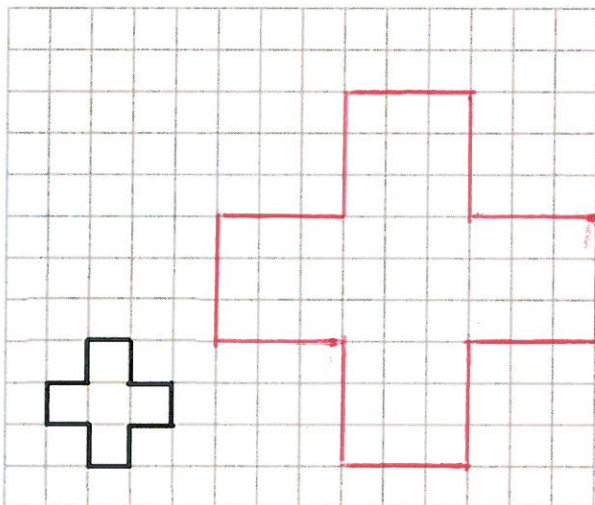
3    6    **8**    14    16  
 28    41    **64**

write down the cube numbers

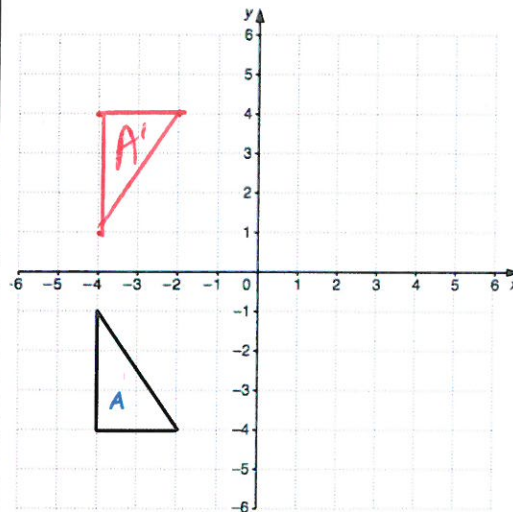
$2^3 = 8$      $4^3 = 64$

write down the cube root of 27.

$\sqrt[3]{27} = 3$



Enlarge the shape by scale factor 3



Reflect triangle A in the x-axis.

Make w the subject of the formula

$y = 3w - a$

$y = 3w - a$   
 $y + a = 3w$   
 $3w = y + a$   
 $w = \frac{y + a}{3}$