

7th January



Corbettmaths

What is the reciprocal of 4?

$$\frac{1}{4}$$

What is the reciprocal of 0.5?

$$2$$

$$1\frac{1}{2} \times 3\frac{1}{3}$$

$$\frac{3}{2} \times \frac{10}{3} = \frac{30}{6} = 5$$

$$5$$

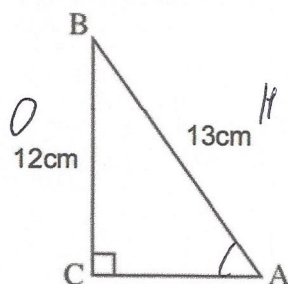
Martin runs 2 kilometres in 2 minutes.

Calculate his average speed.

Give your answer in m/s

$$\begin{aligned} &2 \text{ km in } 2 \text{ mins} \\ &1 \text{ km/min} \\ &1000 \text{ m/min} \end{aligned}$$

$$16.6 \text{ m/s}$$

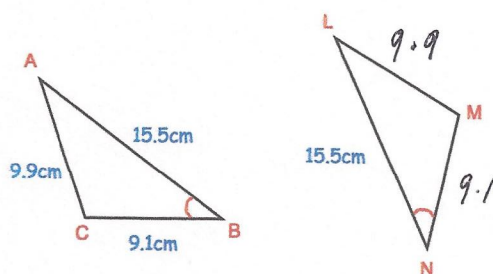


Calculate the size of angle BAC.

$$\sin BAC = \frac{12}{13}$$

$$BAC = \sin^{-1} \frac{12}{13}$$

$$= 67.38^\circ$$

ABC and LMN are congruent triangles.
Angle B = Angle N

Write down the length of LM.

$$9.9 \text{ cm}$$