



17th July

A shopkeeper buys a box of 10 pens for £4.

He sells them for 65p each.

What is his profit?

$$10 \times 65p = \pounds 6.50$$

$$\pounds 6.50 - \pounds 4 = \pounds 2.50$$

5 8 5 12

Calculate the mean

$$5 + 8 + 5 + 12 = 30$$

$$30 \div 4 = 7.5$$

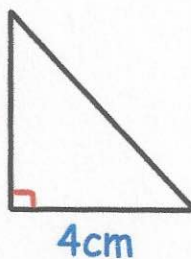
Calculate the range

$$12 - 5 = 7$$

Calculate the mode

5

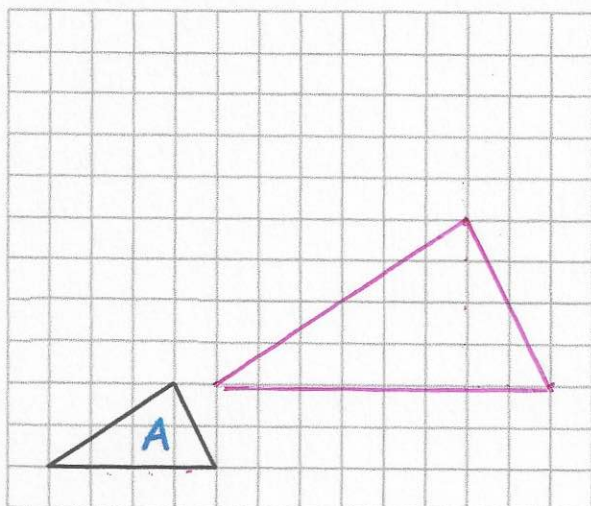
6cm



4cm

Calculate the area of this triangle

$$\frac{1}{2}(6 \times 4) = 12 \text{ cm}^2$$



On the grid, draw an enlargement of triangle A using scale factor 2.