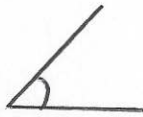


29th July

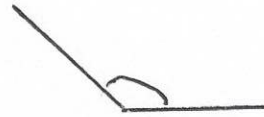


Corbettmaths

Draw an acute angle



Draw an obtuse angle

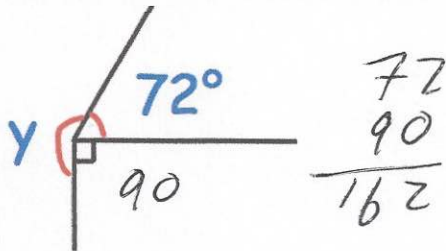


$\frac{3}{5}$ of \$40

$$40 \div 5 = 8$$

$$8 \times 3 = 24$$

\$24



Find y

$$\begin{array}{r} 151 \\ 2 \overline{) 302} \\ \underline{-162} \\ 140 \end{array}$$

198°

Write down the first 15 square numbers

1, 4, 9, 16, 25, 36, 49, 64, 81, 100, 121, 144, 169, 196, 225

Write down the ratio of squares to pentagons.

Simplify your answer.

$$5 : 3$$

$$9 : 3$$

$$\hline 3 : 1$$

