

10th June



Corbettmaths

Expand and simplify

$$9(x + 2) - 3(2x + 2)$$

$$9x + 18 - 6x - 6$$

$$3x + 12$$

8 7 (9) 8 3 8 (9) 8 8 (9) 8

What is the relative frequency of a 9?

$$\frac{3}{11}$$

Write as a single power of 5.

$$\frac{5^3 \times 5^{11}}{5^2}$$

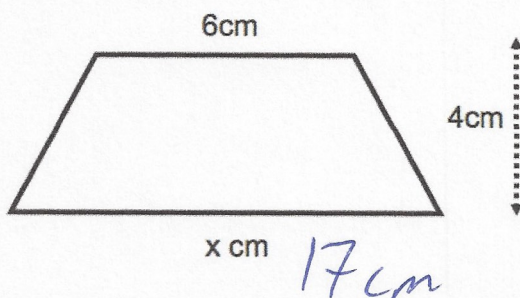
$$\frac{5^{14}}{5^2}$$

$$5^{12}$$

Time (t seconds)	Frequency	$fx$
$20 < t \leq 40$	30	3
$40 < t \leq 60$	50	5
$60 < t \leq 80$	70	2
	<u>10</u>	<u>480</u>

Work out the estimated mean

$$480 \div 10 = 48$$

The area of the trapezium is  $46\text{cm}^2$ .Work out the value of  $x$ .

$$\frac{1}{2}(a+b)h = A$$

$$\frac{1}{2}(6+x) \times 4 = 46$$

$$2(6+x) = 46$$

$$6+x = 23$$

$$x = 17$$