

22nd June



Corbettmaths

Work out

$$4^0$$

1

Evaluate

$$27^{2/3}$$

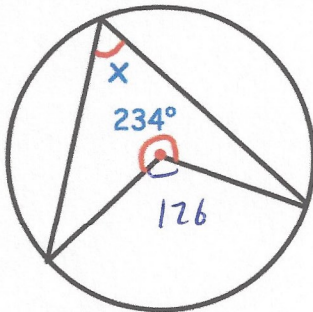
9

Simplify

$$2\sqrt{2} \times 3\sqrt{18}$$

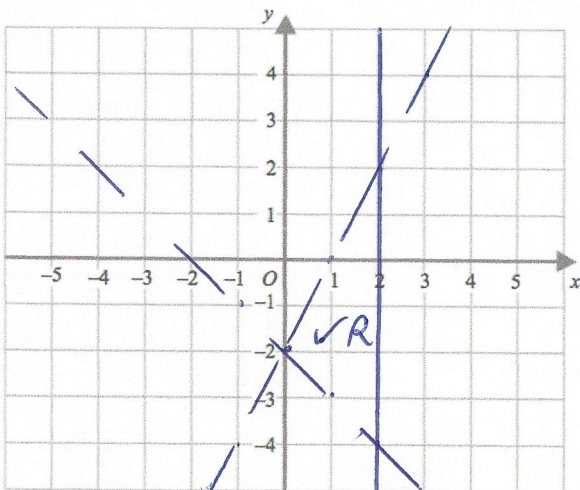
$$6\sqrt{36}$$

$$6 \times 6 = 36$$



Find x

$$126 \div 2 = 63^\circ$$



On the grid, clearly label the region which satisfies all three inequalities below

$$x \leq 2$$

$$y < 2x - 2$$

$$x + y + 2 > 0 \quad y > -x - 2$$