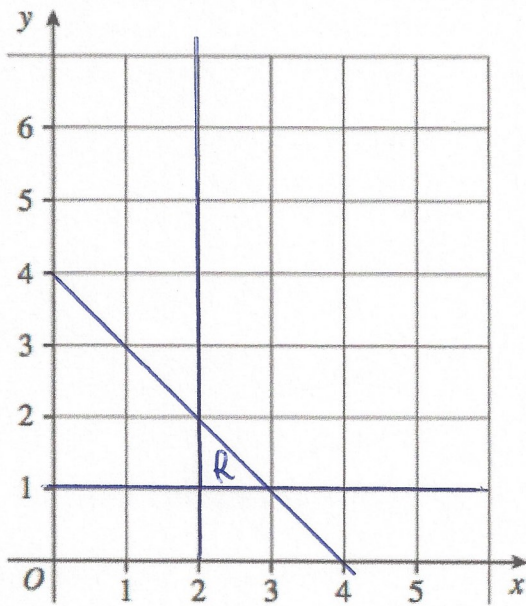


7th June



Corbettmaths

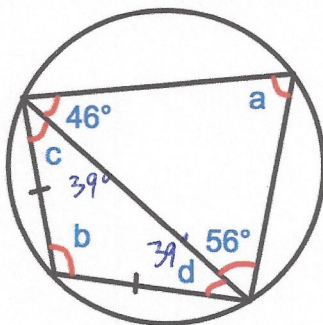


On the grid, clearly indicate the region that satisfies all these inequalities.

$x \geq 2$

$y \geq 1$

$x + y \leq 4$



Find a $46 + 56 = 102$
 $a = 78^\circ$

Find b 102°

Find c $180 - 102 = 78$
 $78 \div 2 = 39^\circ$

Find d 39°

C is directly proportional to the square root of y.

When $C = 12.8$, $y = 16$.

$C \propto \sqrt{y}$

(a) Express C in terms of y.

$C = k\sqrt{y}$

$C = 3.2\sqrt{y}$

$12.8 = k \times 4$

$k = 3.2$

(b) Find C when $y = 400$

$C = 3.2 \times \sqrt{400}$

$C = 64$