

12th March



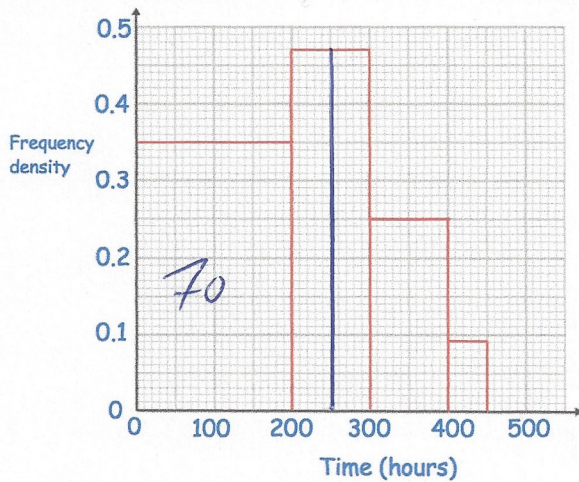
Corbettmaths

Simplify $\sqrt{8} \times \sqrt{2}$

$$\sqrt{16} = 4$$

Simplify $(\sqrt{2})^3$

$$\begin{aligned} \sqrt{2} \times \sqrt{2} \times \sqrt{2} &= \sqrt{8} \\ &= 2\sqrt{2} \end{aligned}$$

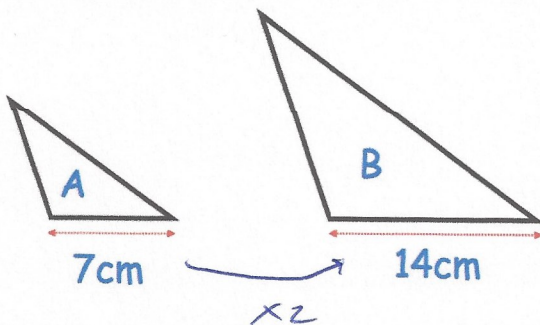


How many pilots flew for under 200 hours?

$$200 \times 0.35 = 70$$

Estimate the number of pilots who have flown under 250 hours.

$$\begin{aligned} 100 \times 0.47 &= 47 \\ 23.5 + 47 &= 70.5 \end{aligned}$$

The area of triangle A is 21cm^2
Work out the area of triangle B.

$$21 \times 2^2 = 84\text{cm}^2$$

Solve

$$9x^2 + 29x - 28 = 0$$

$$(9x - 7)(x + 4) = 0$$

$$x = \frac{7}{9} \text{ or } x = -4$$