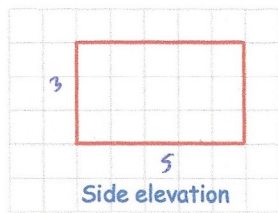
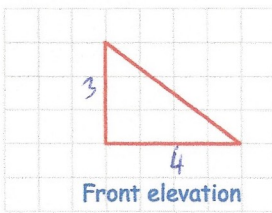


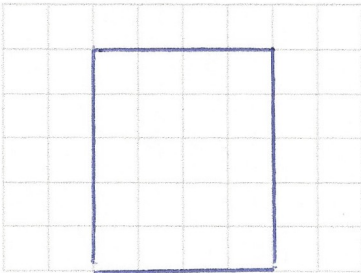
16th March



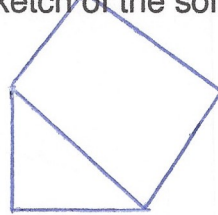
Corbettmaths



On the grid, draw the plan view.



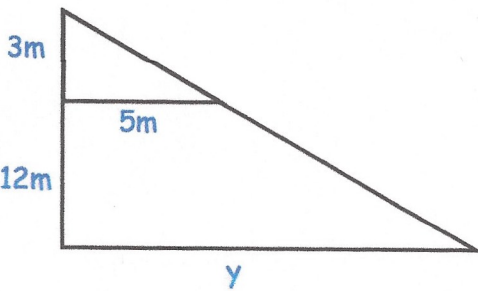
Draw a sketch of the solid shape.



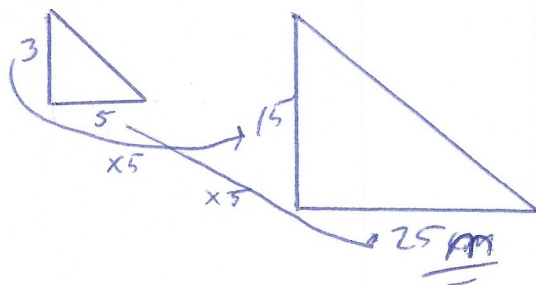
Factorise

$$x^2 - 10x + 25$$

$$(x-5)(x-5)$$



Find y



Solve the simultaneous equations

$$2x + 4y = 24 \quad \times 5$$

$$6x - 5y = 21 \quad \times 4$$

$$24x - 20y = 84$$

$$18x + 20y = 120$$

Add

$$34x = 204$$

$$x = 6$$

$$36 - 5y = 21$$

$$5y = 15$$

$$y = 3$$

$$x = 6$$

$$y = 3$$