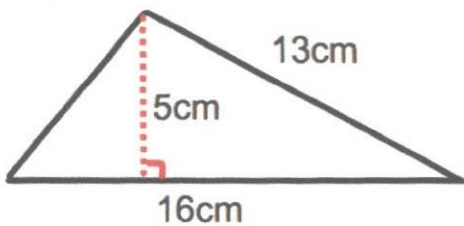


21st March



Corbettmaths



Find the area

$$\frac{1}{2} b h$$

$$\frac{1}{2} \times 16 \times 5 = 40 \text{ cm}^2$$

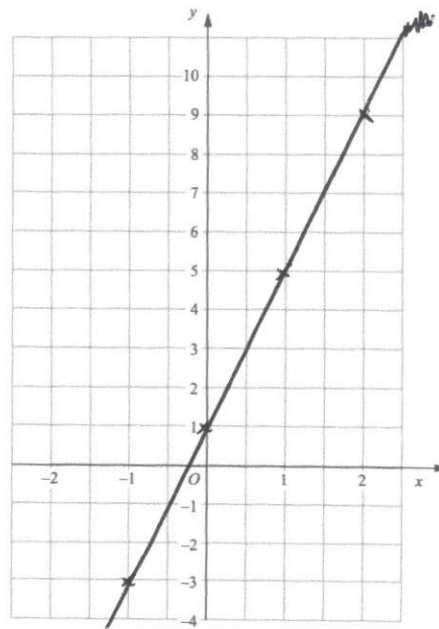
Express 50p as a fraction of £4

Give your answer in its simplest form.

$$\frac{50}{400} = \frac{1}{8}$$

Complete the table of values for  
 $y = 4x + 1$ 

x	-1	0	1	2
y	-3	1	5	9

Draw the graph of  $y = 4x + 1$ .

Snacks can be bought in

a pack of 8 biscuits for £1.92  
a pack of 10 biscuits for £2.55

Which of these two packs is better value for money?

$$1.92 \div 8 = \text{£}0.24 \text{ per biscuit}$$

$$2.55 \div 10 = \text{£}0.255 \text{ per biscuit}$$

pack of 8 is better value