

22nd March



Corbettmaths

Bramley apples cost £4.60 for a 3kg bag at Supervalu supermarket.
The same type of apples cost £11.40 for a 7.5kg bag at Nixon's supermarket.

Supervalu
 $4.60 \div 3 = \pounds 1.53$ per kg

Nixon's
 $11.40 \div 7.5 = \pounds 1.52$ per kg

Where are the apples the best value for value?

Nixon's

A regular polygon has interior angle 150° .

exterior angle = 30°

How many sides does it have?

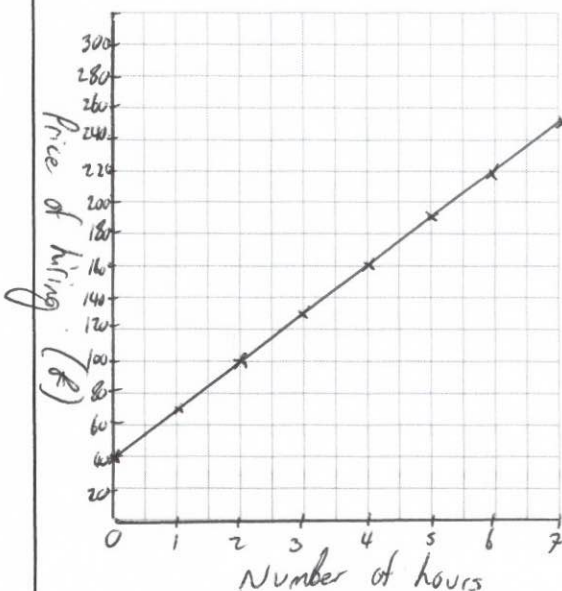
$360 \div 30 = 12$ sides

Age	Frequency	fx
$10 < t \leq 20$	8	120
$20 < t \leq 30$	38	950
$30 < t \leq 40$	28	980
$40 < t \leq 50$	4	180
$50 < t \leq 60$	2	110

Calculate the estimated mean.

$2340 \div 80$

29.25



The price of hiring a plumber is £30 per hour, plus a fixed cost of £40.

Number of hours	1	2	3	4
Price (£)	70	100	130	160

Complete the table

Draw a graph to show the price of hiring the plumber, with number of hours along the x-axis and price along the y-axis.