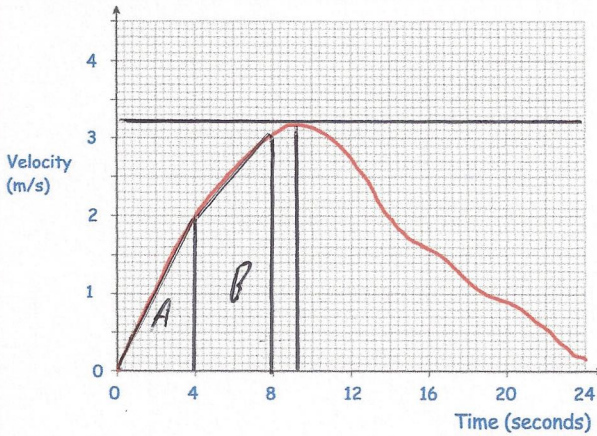


16th May



Corbettmaths



After how many seconds was the acceleration zero?

9.2 seconds

Work out an estimate of the distance travelled in the first 8 seconds?

14m

Here is a velocity-time graph of a particle for 24 seconds

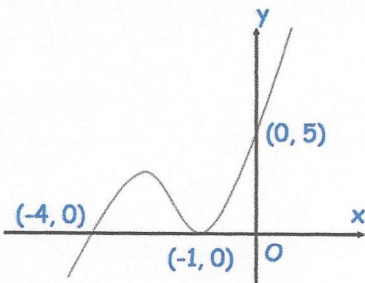
$$A: \frac{1}{2} \times 4 \times 2 = 4$$

$$B: \frac{1}{2} (2+3) \times 4 = 10$$

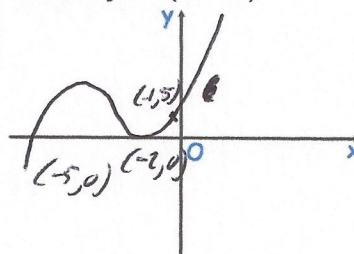
Is your answer to the distance travelled an over-estimate or an under-estimate? Explain your answer

Under-estimate, the curve is above the lines I have drawn, so the actual

distance is slightly higher than 14m.



Sketch $y = f(x + 1)$

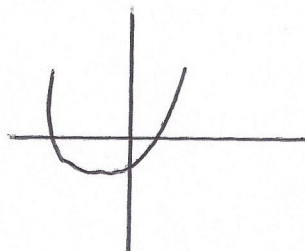


Solve

$$2x^2 + 3x - 2 \leq 0$$

$$(2x - 1)(x + 2)$$

$$x = 0.5 \quad x = -2$$



$$-2 \leq x \leq 0.5$$