

16th May



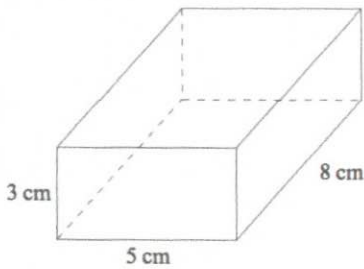
CorbettMaths

	London	New York	Beijing
High	29	30	41
Low	-3	-10	2
	32	40	39

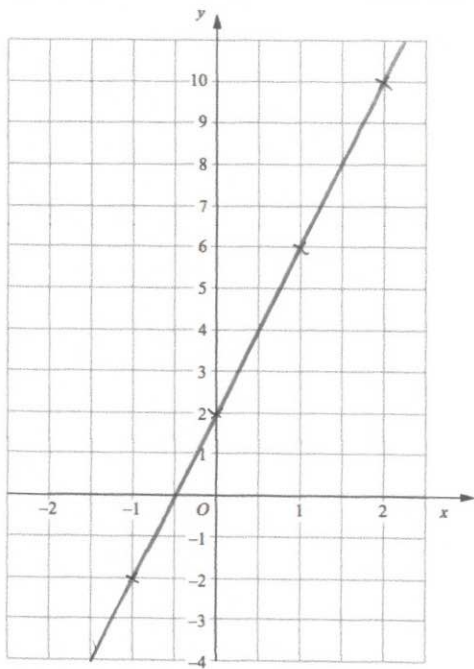
Which city had the largest difference between their high and low temperature?

New York

Calculate the volume



$$3 \times 5 \times 8 = 120 \text{ cm}^3$$



Complete the table of values for $y = 4x + 2$

x	-1	0	1	2
y	-2	2	6	10

On the grid, draw the graph of $y = 4x + 2$

Simplify

$$\frac{c^6}{c^4}$$

$$c^2$$

Simplify

$$(c^8)^2$$

$$c^{16}$$