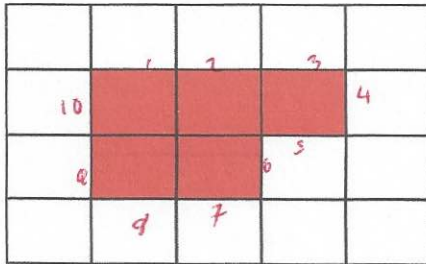
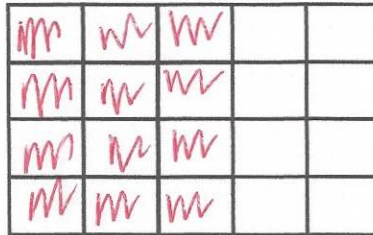


18th May



Corbettmaths

Shaded three fifths of this grid



Draw on 1cm grid

What is the area?

$5\text{cm}^2$

What is the perimeter?

$10\text{cm}$

Arrange the following numbers in order, from smallest to largest

61%      59%      0.6      62%

59%  
0.6  
0.61  
62%

Small pack  
Contents  
3 plates



Large pack  
Contents  
12 plates

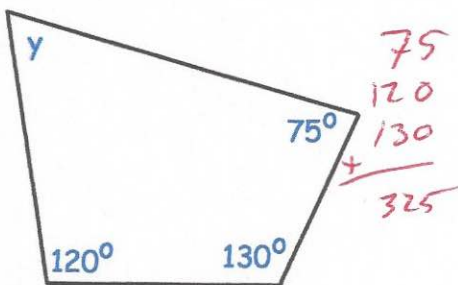
£5.25  $\times 4$

£21.24

$\pounds 21$

Which is better value for money?

Small pack



Find the size of y

$$360 - 325 = 35^\circ$$