

21st May



Corbettmaths

Harry catches the train from Belfast to Dublin at 4pm.
The average speed of the train is 70mph and the distance from Belfast to Dublin is 105 miles.
What time does Harry arrive in Dublin?

$s = d \div t$

$$\frac{105}{70} = 1.5$$

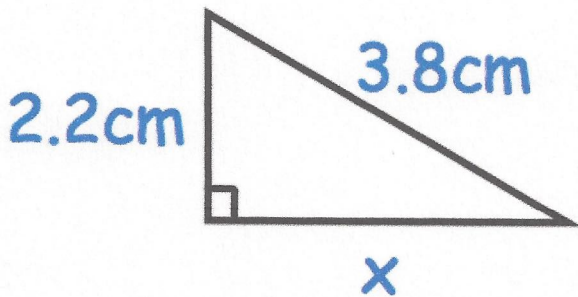
5:30 pm

A garage sells cars. It offers a discount of 10% off the normal price for cash.
Frances pays £4140 cash for a car.
Calculate the normal price of the car.

$$90\% = 4140$$

$$10\% = 460$$

$$\pounds 4600$$



Find x.

$$x^2 + 2.2^2 = 3.8^2$$

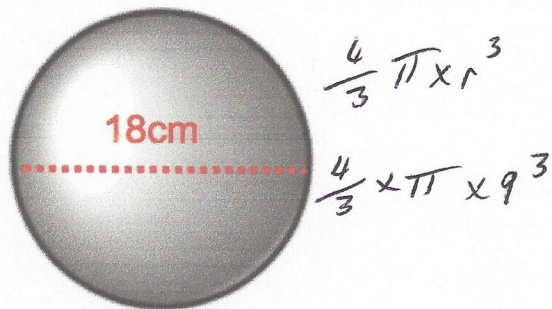
$$x^2 = 9.6$$

$$x = 3.098 \text{ cm}$$

Time (t minutes)	Frequency	fx
$0 < t \leq 10$	5	2
$10 < t \leq 20$	15	8
$20 < t \leq 30$	25	12
$30 < t \leq 40$	35	7
$40 < t \leq 50$	45	1
	<u>30</u>	<u>720</u>

Work out the estimated mean

$$720 \div 30 = 24$$



Calculate the volume of the sphere.
Give your answer to 1 decimal place.

$$3053.6 \text{ cm}^3$$