

23rd May



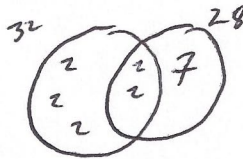
Corbettmaths

Michael organises his books into groups of 32. He then organises them into groups of 28. LCM of 32 & 28

What is the smallest possible number of books that Michael has.

$$32 = 2 \times 2 \times 2 \times 2 \times 2$$

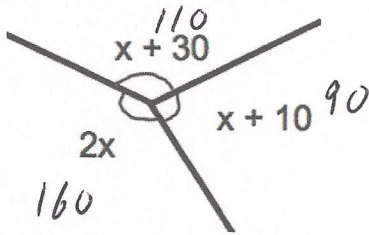
$$28 = 2 \times 2 \times 7$$



$$2 \times 2 \times 2 \times 2 \times 2 \times 7$$

224

Three angles meet at a point.



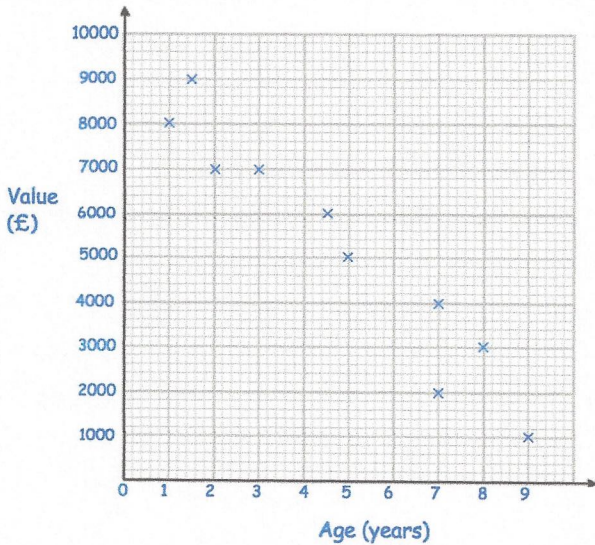
Calculate the size of the largest angle.

$$4x + 40 = 360$$

$$4x = 320$$

$$x = 80$$

160°



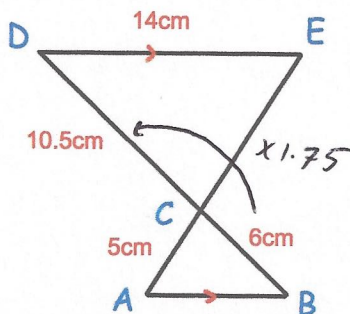
Describe the relationship shown in the scatter diagram.

As the age ~~decreases~~ increases, the value decreases.

A negative correlation

Explain why it may **not** be appropriate to use your line of best fit to estimate the value of a 15 year old car.

It is beyond the range of the data given, i.e. up to 9 years



ACE and BCD are straight lines.

DE is parallel to AB.

Work out the size of AB.

$$14 \div 1.75$$

8cm