

25th May



Corbettmaths

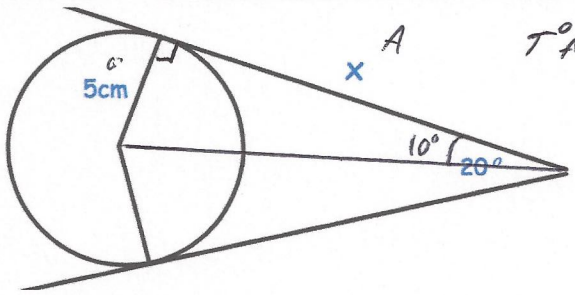
In 2014 the value of a house was £180,000

The value of the house increases by 5% in the first year and 11% for the next 3 years

Work out the value of the house in 2018

$$180000 \times 1.05 = 189000$$

$$189000 \times 1.11^3 = 258482.26$$



Calculate the length of x.

$$\frac{5}{\tan 10^\circ} = 28.3564 \text{ cm}$$

Solve

$$5x^2 - 11x + 2 = 0$$

$$a = 5 \quad b = -11 \quad c = 2$$

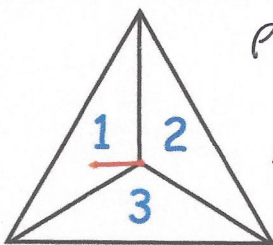
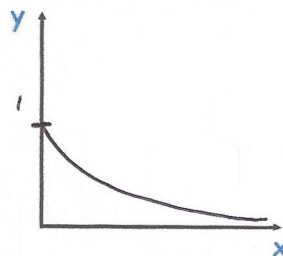
$$x = 2 \text{ or } x = \frac{1}{5}$$

$$\text{or } (5x-1)(x-2) = 0$$

$$x = \frac{1}{5} \text{ or } x = 2$$

Sketch the graph of $y = 0.5^x$

for $x \geq 0$



$$P(1 \text{ or } 3) = \frac{1}{3} \times \frac{1}{3} = \frac{1}{9}$$

$$P(3 \text{ or } 1) = \frac{1}{9}$$

$$P(2 \text{ or } 2) = \frac{1}{9}$$

The spinner is spun twice.

A score is found by adding the two numbers together.

Find the probability of a score of 4

$$\frac{1}{9} + \frac{1}{9} + \frac{1}{9} = \frac{3}{9} = \frac{1}{3}$$