

28th May



Dara writes down a 4 digit even number.
0 2 4 6 8

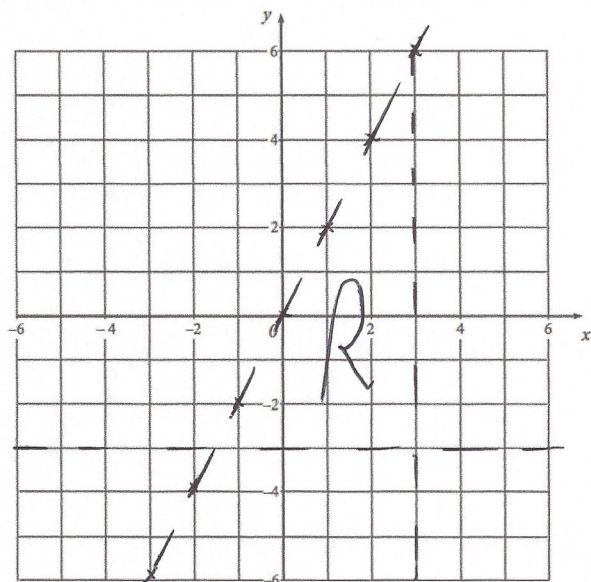
The first digit is 7

The third digit is prime 2 3 5 7

How many possible numbers are there?

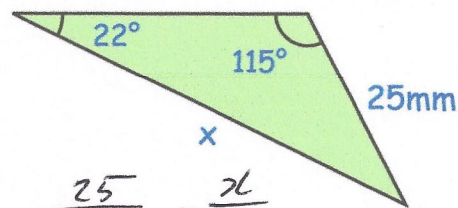
1st 2nd 3rd 4th Corbettmaths
1 x 10 x 4 x 5

200



On the grid, label the region that satisfies all three of these inequalities

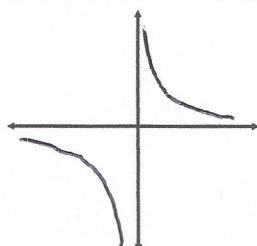
$x < 3$ $y > -3$ $y < 2x$



$$\frac{25}{\sin 22} = \frac{x}{\sin 115}$$

Find x ~~mm~~

$$x = 60.484 \text{ mm}$$



Sketch $y = \frac{1}{x}$ where $x \neq 0$