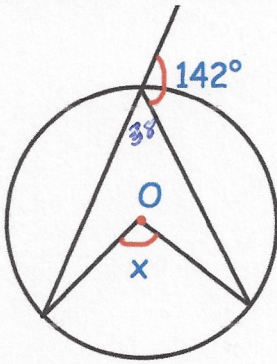


3rd May



Corbettmaths



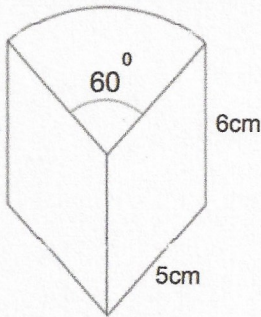
Find x

$$38 \times 2 = 76^\circ$$

Simplify $\sqrt{80}$

$$\sqrt{16} \times \sqrt{5}$$

$$4\sqrt{5}$$



$$\frac{1}{6}(\pi \times 5^2) = 13.0899\dots$$

Calculate the volume of the prism.

$$13.0899\dots \times 6 =$$

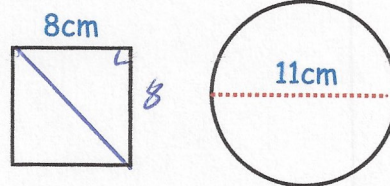
$$78.5398 \text{ cm}^3$$

Will the square fit inside the circle without touching the circle?

$$8^2 + 8^2 = 128$$

$$\sqrt{128} = 11.3\dots \text{ cm}$$

No



Evaluate

$$\left(\frac{16}{25}\right)^{\frac{1}{2}}$$

$$\frac{4}{5}$$